

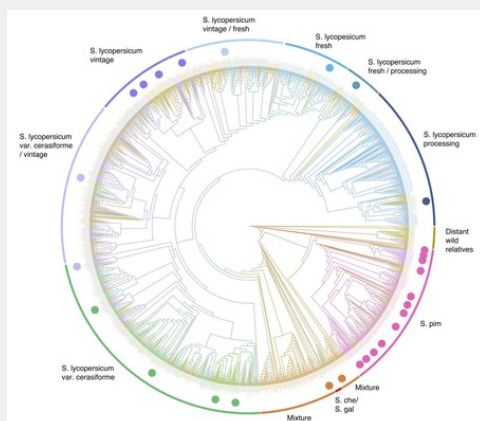
COMPREENDER



Digital twins for tomatoes, food and farming

Today, more and more companies are using digital twins of physical devices, which evolve over time thanks to data collected by sensors, for example to measure the level of wear and tear on machine parts and prevent them from wearing out or breaking down.

LER MAIS



DNA hidden structural variants affect crop traits

Powerful new genome editing technology make variants easier to detect.

LER MAIS



[Remover](#) [Editar inscrição](#)
Quinta das Pratas Avenida 25 de Abril
2070-158 Cartaxo
Lisboa