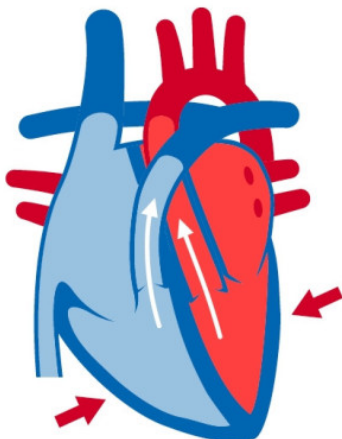
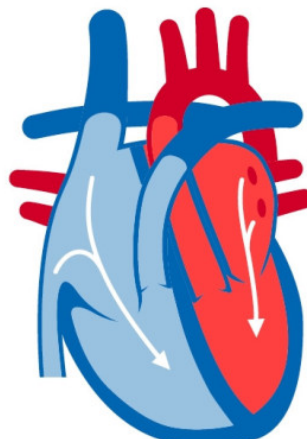


COMPREENDER



Systolic Blood Pressure
(Pumping phase)



Systolic Blood Pressure
(Filling phase)

Meta-analysis supports lycopene's blood pressure benefits

Lycopene supplementation significantly decreased systolic and diastolic blood pressure in hypertensive subjects. It may have more beneficial effects in patients with elevated baseline diastolic blood pressure, says a new meta-analysis of clinical trials.

LER MAIS



Navatta: 'ready to use' automatic bags loader

Navatta Group applies the "ready to use" automatic aseptic bags loader on aseptic fillers.

LER MAIS



Italy: New project aims to find the processing tomato variety of the future

The project, led by Tera Seeds, also involves Conserve Italia and CREA OF

LER MAIS



[Remover](#) [Editar inscrição](#)

Quinta das Pratas Avenida 25 de Abril
2070-158 Cartaxo
Lisboa

Privacy Protected